



PARTS BREAKDOWN

PRESSURE WASHER

MODEL:MN4013HA



PARTS BREAKDOWN

PRESSURE WASHER

MODEL:MN4013HA

COMPONENTS



REF #	DESCRIPTION	QTY	BE PART #
1	SPRAY NOZZLE SET	1	85.210.035
2	HIGH PRESSURE HOSE, 50' X 3/8"	1	85.238.153
3	SPRAY GUN WAND ASSEMBLY	1	85.205.026
4	COMPLETE PUMP ASSEMBLY	1	85.129.037B
5	COMPLETE ENGINE ASSEMBLY	1	*CHECK WITH HONDA
6	FRAME ASSEMBLY	1	85.600.120N
7	WHEELS (EACH)	2	85.660.054BF
8	SOAP TUBE	1	85.400.005

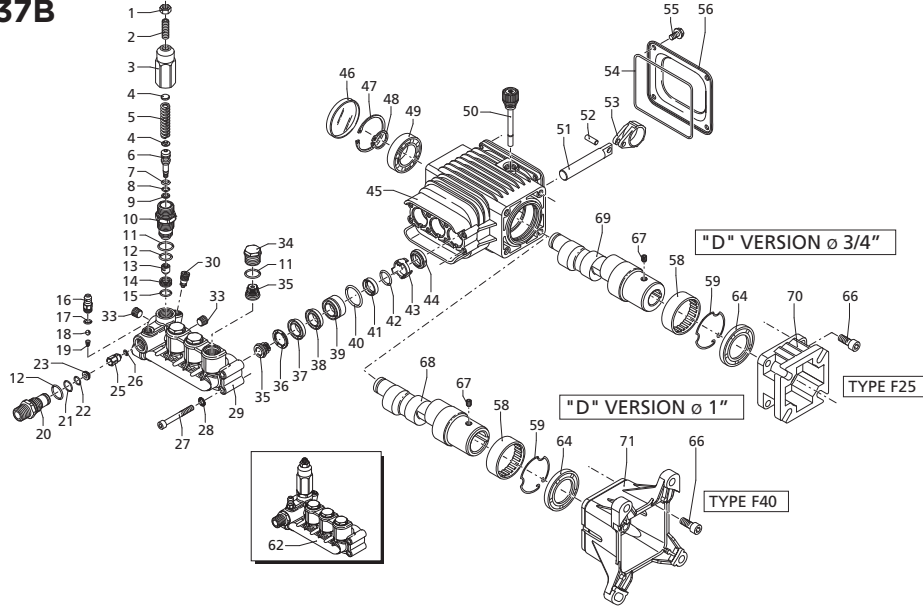
***CHECK WITH HONDA FOR ENGINE BREAKDOWN AND PARTS**

PARTS BREAKDOWN

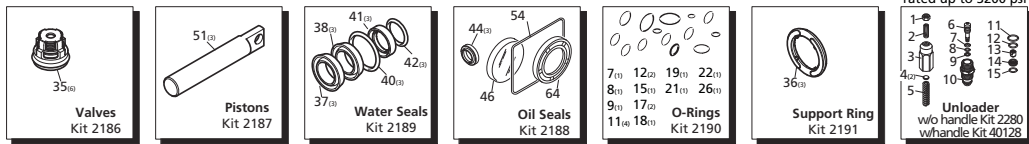
PRESSURE WASHER

MODEL:MN4013HA

PUMP: 85.129.037B



Repair Kits



Pos	Code	Description	Qty.	Pos	Code	Description	Qty.	Pos	Code	Description	Qty.																																				
1	1980300	Nut M6	1	40	770260	O-Ring ø23.52x1.78	3	<i>OIL CAPACITY - 16 oz</i>																																							
2	2760420	Grub screw M6x12	1	41	1260440	Gasket	3	Legend <table style="width: 100%; border: none;"> <tr> <td style="text-align: center;">ø 15</td> <td style="text-align: center;">ø 15</td> <td style="text-align: center;">ø 15</td> <td style="text-align: center;">ø 15</td> </tr> <tr> <td style="text-align: center;">For ▽</td> <td style="text-align: center;">For ☒</td> <td style="text-align: center;">For ▲</td> <td style="text-align: center;">For □</td> </tr> <tr> <td style="text-align: center;">RSV2.5G25</td> <td style="text-align: center;">RSV3G25</td> <td style="text-align: center;">RSV3.5G35</td> <td style="text-align: center;">RSV4G30</td> </tr> <tr> <td colspan="3"></td> <td style="text-align: center;">For ○</td> </tr> <tr> <td colspan="3"></td> <td style="text-align: center;">RSV3G30</td> </tr> <tr> <td colspan="3"></td> <td style="text-align: center;">For ■</td> </tr> <tr> <td colspan="3"></td> <td style="text-align: center;">RSV4G35</td> </tr> <tr> <td colspan="3"></td> <td style="text-align: center;">For ●</td> </tr> <tr> <td colspan="3"></td> <td style="text-align: center;">RSV3G35</td> </tr> </table>				ø 15	ø 15	ø 15	ø 15	For ▽	For ☒	For ▲	For □	RSV2.5G25	RSV3G25	RSV3.5G35	RSV4G30				For ○				RSV3G30				For ■				RSV4G35				For ●				RSV3G35
ø 15	ø 15	ø 15	ø 15																																												
For ▽	For ☒	For ▲	For □																																												
RSV2.5G25	RSV3G25	RSV3.5G35	RSV4G30																																												
			For ○																																												
			RSV3G30																																												
			For ■																																												
			RSV4G35																																												
			For ●																																												
			RSV3G35																																												
3	1980540	Unloader knob	1	42	640070	O-Ring ø13.95x2.62	3																																								
4	1980220	Spring plate	2	43	2760310	Spacer	3																																								
5	2760410	Spring	1	44	1260460	Oil seal	3																																								
6	2760400	Valve piston	1	45	2760010	Pump body	1																																								
7	2260100	O-Ring ø6.02x2.62	1	46	1266740	Bearing cap	1																																								
8	660190	O-Ring ø6.07x1.78	1	47	1260790	Circlip ø52	1																																								
9	2760210	Ring	1	48	1780550	Snap ring	1																																								
10	2760050	Piston guide	1	49	2760340	Bearing	1																																								
11	1200690	O-Ring ø15.6x1.78	4	50	880130	Oil cap	1																																								
12	394280	O-Ring ø12.42x1.78	2	51	2760040	Piston	3																																								
13	2260070	By-pass jet	1	52	1780050	Piston pin	3																																								
14	2760090	Seat	1	53	1780040	Con rod Aluminum	3																																								
15	770140	O-Ring ø11.11x1.78	1	54	1780710	Con rod Bronze	3																																								
16	1982520	Hose nipple	1	55	2760280	O-Ring ø101.27x2.62	1																																								
18	1250280	Ball	1	56	802190	Bolt M6x12	4																																								
19	1560520	Spring	1	58	2760110	Rear cover	1																																								
20	2760230	Detergent injector 3/8" G	1	59	2760350	Bearing	1																																								
21	2760270	O-Ring ø12x1	1	62	1321190	Bearing	1																																								
22	1470210	O-Ring ø9x1	1	69	1321080	Snap ring	1																																								
23	2760120	Injector insert	1	62	2769201	Complete pump head w/o EZ start	1																																								
25	2760130	Jet	1	62	2769209	Complete pump head EZ-start	1																																								
26	1460430	O-Ring ø4x2.5	1	64	480671	Oil seal	1																																								
27	801080	Bolt M6x50	8	66	180030	Bolt M8x20	4																																								
28	1381550	Lockwasher	8	67	820440	Set screw M6	1																																								
29	2760020	Head - w/o EZ-start	1	68	1780340	Hollow shaft ø1"	1																																								
29	2761050	Head - Bare EZ-start	1	68	1780920	Hollow shaft ø1"	1																																								
29	2760330	Head - Bare w/o EZ-start	1	68	1780330	Hollow shaft ø1"	1																																								
30	2760630	EZ-start plug	1	68	1780590	Hollow shaft ø3/4"	1																																								
33	2760260	Plug 1/4" G	2	68	1780600	Hollow shaft ø3/4"	1																																								
34	2760180	Plug	3	70	1780580	Flange F25	1																																								
35	2769050	Complete valve	6	71	2760290	Flange F40	1																																								
36	2760220	Support ring	3	71	AR64516	Oil	1																																								
37	1342761	Gasket	3																																												
38	1981580	Ring	1																																												
39	1981570	Piston guide	3																																												

Special Note:
Kit #42369
 Complete unloader w/seat for pumps over 3200 PSI



If you need technical assistance call:

1-866-850-6662

(8:00am - 4:30pm PST, Mon - Fri)